



VILLAGE ESTATES

• EST.1993 •



93 Main Road, Sidcup, Kent DA14 6ND

Tel: 0208 302 1002

www.village-estates.com

Email: sidcup@village-estates.com



Outbuilding I Garage

0.4 Mile - Sidcup Mainline Station

Extended Lounge

Short Walk to High Street

Waring Park

Energy Efficiency Rating 'C'



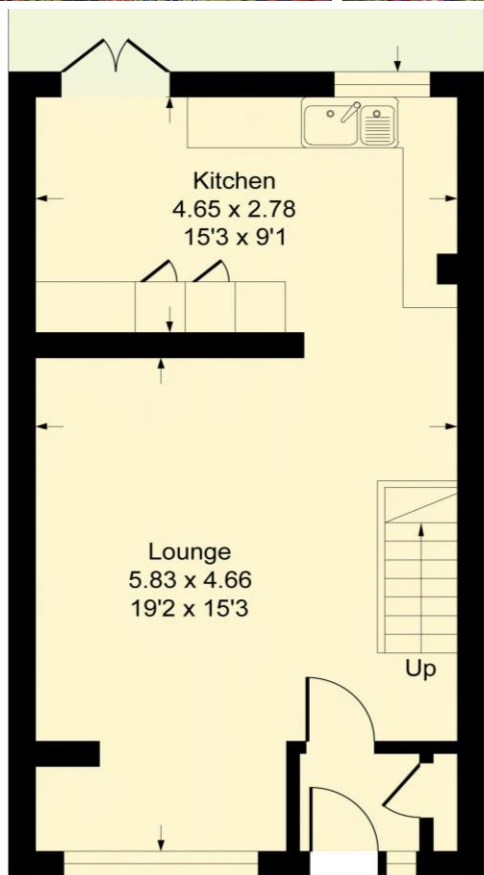
11 Langford Place
Sidcup, DA14 4AY

Guide Price £425,000-£450,000

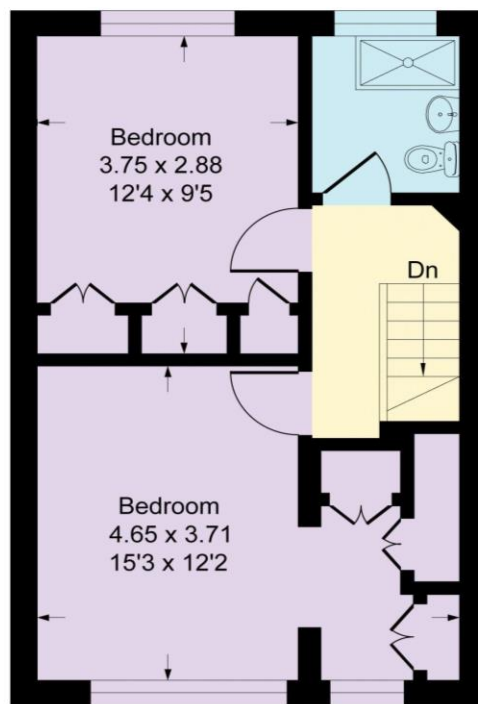
Set within a quiet location, yet so close to Sidcup High Street and mainline station. Superb if you commute into London. Formerly a three-bedroom property and now a two bedroom meaning both bedrooms are a great size with ample storage that any modern day buyer would appreciate.

EPC RATING: C
TENURE: Freehold

COUNCIL TAX BAND: D
LEASE TERM: Not Applicable



Ground Floor



First Floor

CONSUMER PROTECTION FROM UNFAIR TRADING REGULATIONS 2008

Please note that any services, heating system or appliances have not been tested, and no warranty can be given or implied as to their working order. You are advised to obtain verification from your solicitor or surveyor. References to the tenure of a property are based on information supplied by the seller. We have not had sight of the title documents and a buyer is advised to obtain verification from their solicitor. Items shown in photographs are not included unless specifically mentioned within the sales particulars, but may be available by separate negotiation. Whilst every attempt has been made to ensure the accuracy of the floor plan contained here, measurements of doors, windows, rooms and any other items are approximate and no responsibility is taken for any error, omission, or mis-statement. We advise you to book an appointment to view before embarking on any journey to see a property, and check its availability. The accuracy of these details are not guaranteed and they do not form part of the contract.